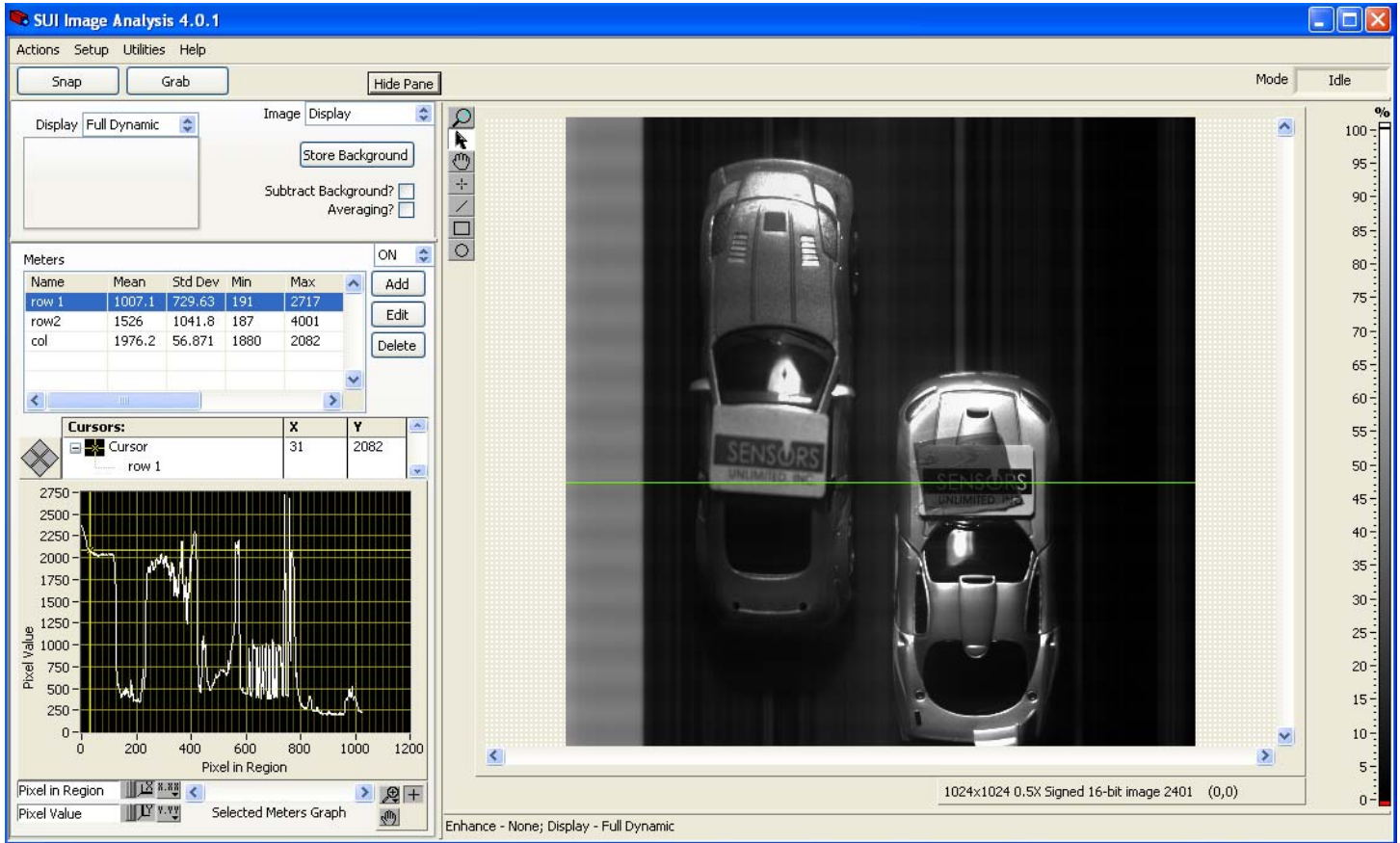


SUI™ Image Analysis Software for SWIR Imaging

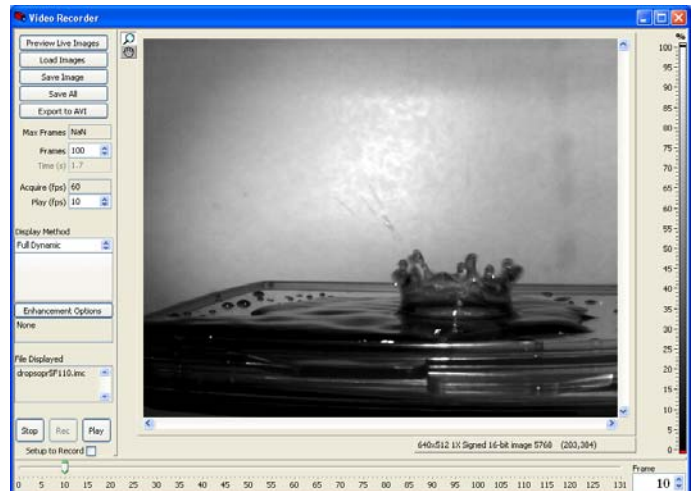
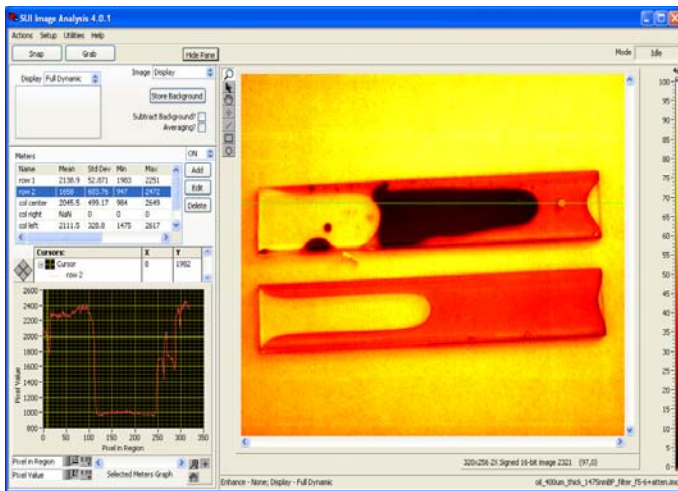


FEATURES

- Provides full camera control with an easy-to-use graphical user interface
- Single-scan, continuous, averaged, windowed, video or triggered video image acquisition, storage and retrieval, with options to stream to RAM or disk
- Storage options in binary, bitmap, png, text, avi or jpeg file formats, with choice of scaling options and provision for separate storage of background images
- Image analysis includes multiple user-created line profiles, histograms, and spot meters
- Included with all GOODRICH camera families including line-scan, full frame and windowed area cameras
- Works with National Instruments frame-grabber cards via the LabVIEW® Run-time Engine when NI IMAQ imaging software driver is installed
- Image intensity scaling options for autoscale to min-max, to 90% of max, fixed limits or bit shifted
- Image enhancement options, including histogram equalization, are available to provide increased contrast within all intensity ranges

SUI knows IR™

3490 U.S. Route 1 • Princeton, New Jersey 08540
Phone: (609) 520-0610 • Fax: (609) 520-0638
www.sensorsinc.com • sui_sales@goodrich.com



Line Profile: The ROI window graph on the lower left shows the pixel intensity profile along the horizontal green cursor shown on top of the image of the upper cuvette. This cuvette holds both water and used motor oil, while the lower one just has oil. SWIR imaging through a 1475 nm bandpass filter causes the water to appear black while the oil is red and air bubbles transparent in this pseudo-colored image.

Video Recorder: The Video Recorder utility shows one frame of a video of water dropping onto a plate. The utility permits acquiring frames into computer RAM or to stream images onto media storage memory. Images can be recorded from the cameras at full speed and played back in slow motion, making use of all display and enhancement options. Frames can be stored individually or converted to a compressed AVI.

SYSTEM REQUIREMENTS

Operating System:	Windows XP or later
Frame Grabber	National Instruments PCI-1422 (RS-1422 interface) National Instruments Camera Link® compatible frame grabbers: PCIe-1426, PCIe-1427, PCI-1428, PCIe-1429, PCIe-1430 (one camera at a time)
Computer	P-III 800 MHz Pentium compatible or better, with 35 MB of free hard drive space
Display	SXGA (1280 x 1024) or higher resolution
RAM memory	512 MB minimum, 1.25 GB free for ~ 2 minute movie capture (7200 frames at 60 fps)
Software drivers ¹ (included on distribution CD)	National Instruments IMAQ® version 3.8, or version 4.1 or higher (NI LabView Run-time Engine automatically installed with this software)
Camera ^{1,2}	All M, KT, H, and LD camera product families from Sensors Unlimited, Inc.

¹ Camera not needed for installation or for analysis of stored image files in compatible formats

² SUI™ Image Analysis software will be included on the support CD shipped with Goodrich cameras. Contact Goodrich to obtain a copy or update electronically. Media with the software, appropriate NI compatible ICD file and camera manual available for a small fee

Legal Notices

This software program is provided free of charge for the purpose of demonstrating the operation and usage of the SUI™ camera products. Goodrich makes no warranties of any kind for this software program, either expressed or implied as to any matter including, but not limited to, warranty of fitness for any purpose, warranty of non-infringement of trademarks, patents or copyrights, or warranty of merchantability. Users acknowledge that the program is a research tool, and that it is being supplied "as is," without any accompanying services or improvements from Goodrich.